

Installing the DEER2008 Database and MISer Tool (database version deer2008.2.05)

This document provides detailed information on installing the DEER database and using the MISer program to view the data in the database. It is recognized that the installation is not a simple “one-click” process, but the database has been successfully installed on a wide-range of computers and MS-Windows Operating systems. Please pay careful attention to all of the enumerated installation steps when installing the database for the first time.

1. Download the required files.

Go to the DEERresources.com web site and log in using the displayed username and password (DEER & 2008). Once logged in, choose the “09-11 Planning/Reporting” page from the menu on the left side of the page. *You will need to download three files to install the database for the first time:*

a. The database file: “[deer2008.2.08.exe](#)”

Energy Impacts and Load Shape Data

Energy and Load Shape Data Set 1 (updated measure data)
This data set includes results for both whole-building (i.e. with HVAC in 2009 planning and reporting filings the whole-building values (those w contents has been updated (see section at the bottom of this page).

Use the following instructions to install the update (for more detailed in

1. Download the self-extracting file that contains the new database **DEER2008.2.05 for New and Existing Buildings** (Updated 15 De updated measures including 8760 electric load shapes. These climate zones and IOU service territories. The existing vintage a vintages based on age-based existing building stock square fo
This data set includes all of the results commonly used for Calif
2. Download and install the latest MISer program:
You MUST use MISer version 4.0.10.00 or later (latest version: i

Download the DEER2008.2.05 self-extracting file. It is a fairly large file (about 1 gigabyte, or 1000 megabytes). With Internet Explorer, right click on the link and use “Save Target As ...” to save the file to your computer. With Firefox, right click on the link and use “Save Link As ...”. Save it to a location on your computer that you can easily find again.

- b. The latest “minor update” file: “[DEER2008.2.05-update-C.zip](#)”

Minor Updates

- [DEER2008.2.05-update-C.zip](#) (Updated 13 May 2009)
This update fixes a few minor interface issues without changing any of the actual category measures to be searchable and exportable. The latest update also reworked the interface; these results were for testing purposes only and were not intended to be used.

Use the same procedure as with the previous file and save it to a location on your computer that you can easily find again.

- c. The database viewer installation program: “[MISerSetup_v1.10.07.msi](#)”

DEER Energy Data Viewer Tool

The DEER2008 energy results are stored in a portable MySQL database. Measure data called MISer. Download and install the latest version of MISer:

[MISerSetup_1.0.10.00.msi](#) or [MISerSetup_1.0.10.00.zip](#) (Version 1.0.10.00 posted database format.

[MISerSetup_1.10.07.msi](#) or [MISerSetup_1.10.07.zip](#) (Version 1.10.07 posted September 2009). This version fixes a few graphing and export issues in the DEER2008.2.05 database format. This version fixes a few graphing and export issues in the previous four-number system).

Again, use the same procedure as with the previous file and save it to a location on your computer that you can easily find again. If your ISP or network security settings do not allow you to download MSI installation files, download the “zip” version of the same file (shown above).

2. **Install the MISer application and have MISer create a blank database.**

Install the MISer application by running the MISerSetup program. If you downloaded the “zip” version of the installation file, first extract the setup program by “unzipping” the file.

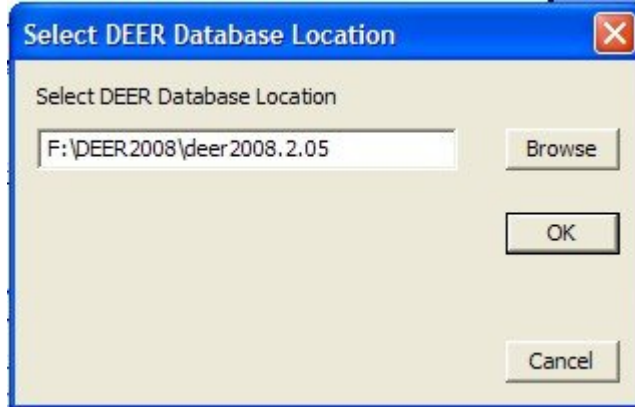
Allow the installation program to use the default folder options; click “Next” when prompted until the program is installed.

Start this latest version of MISer. You may have multiple versions of MISer installed on your computer, which allows you to view different versions of the DEER2008 database. Start this version by going to the Start menu, choosing “All Programs” and then selecting the “DEER_v2.05” menu item. Click on the MISer icon within this menu item.

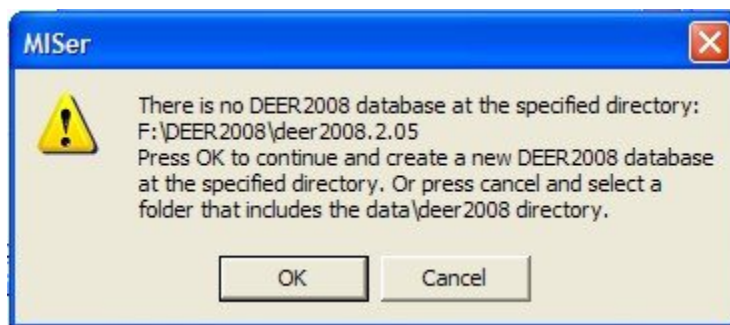
When the program starts, it will prompt you for a database location. Since you have not yet installed the actual database files, you can choose any location. Be sure to choose a drive with at least a few gigabytes of free data space remaining. You can use the “Browse” function to point to an existing directory, or just type in the desired location. **Do not choose a location on your company’s network,**

you must choose a local drive.

Below, I've specified a directory called "deer2008.2.05" so that I'll always be sure what version of the database is located there.



After you press "OK", the MISer program will see that you have pointed to a location that does not contain the actual database and the program ask you if it is okay to create a new (blank) database there.



When you press "OK", MISer will install a "blank" database at the specified location. ***The MISer application will start, but with no data to actually view.*** Close the MISer application.

3. **Install the DEER database files.**

Locate the large file you downloaded in step 1 of this process (deer2008.2.05.exe). Start the self-extracting file by double clicking on it. The program will prompt you to specify a location to extract the files to. **Do not accept the default location!** Instead, click on the button next to the edit box and browse to the directory where MISer installed the blank database. From that directory, choose the "data" sub-directory and then the "deer2008" sub-directory underneath that.

If MISer created the blank database to "deer2008.2.05" like the example in the previous step, then you must specify this directory:

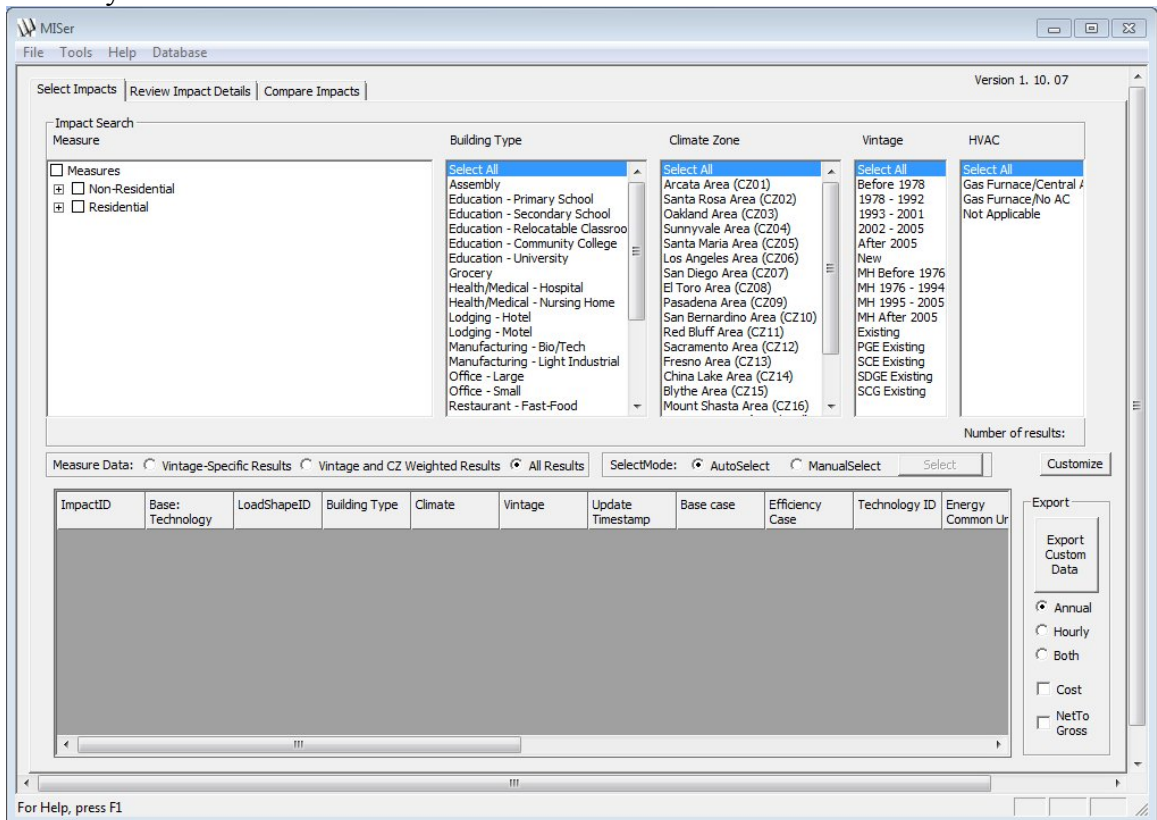


When you press “Extract”, the program will soon ask you to “Confirm File Replace”. Reply with “Yes to All”. If the program does not ask for this confirmation by the time it gets to “5% Extracting”, you did not properly point to the blank database. Cancel the process and start step 5 over again.

The extraction process will take a few minutes.

4. Install the “Minor Update”.

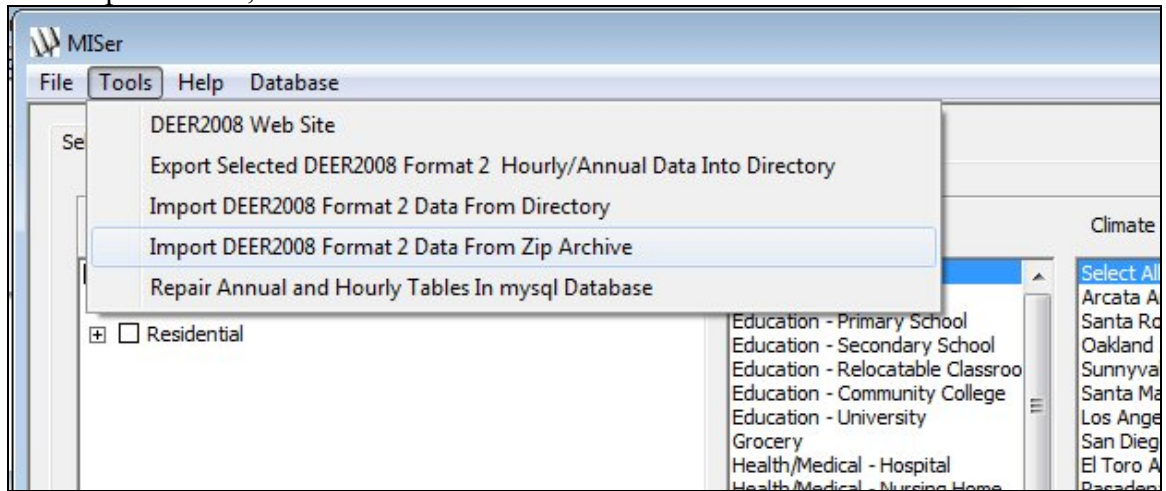
Start the latest version of MISer again, this time accepting the default database directory. You should now see a screen similar to the one below:



You’re almost done installing the database, but there is one more critical step.

Go to the MISer “Tools” menu and choose the “Import DEER2008 Format 2 Data

from Zip Archive”, as shown below:



When prompted, point to the minor update file that you downloaded in step 1 of this process (*DEER2008.2.05-update-C.zip*). The program will install the update and reload the displayed data.

You should now be ready to browse the DEER2008 database user the MISer program.